



APPI
technology

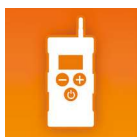
Communication
& Safety



HANDS-FREE COMMS

APPI-C^ovR RADIO

APPI-COM⁺ RADIO
LR



APPI-Smart Compatible

SAFETYCOMMS FIRST!™

APPI radios offer hands-free conference mode over 3.8 km without fixed or mobile base (Int'l patent).

With the SyncAll® technology, any APPI radio can leave the team (lost signal, etc.) without affecting communication between the others, and then automatically return to the team's COMM : a guarantee for Safety and Efficiency. APPI-Com and APPI-Covr radios are mixable in a group and allow an unlimited number of people in the team.

APPI-COM^{LR}



Bluetooth



GSM
Compatible



APPI-Smart
Compatible



Walkie-Talkie
Compatible



Lone worker
protection



SCBA
Compatible



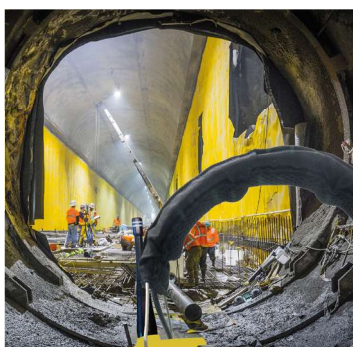
Water & dust
Resistant



ATEX

APPI-Com is a long range, wireless and ultralight communication system. Despite the obstacles, it ensures a clear exchange within teams working in hostile environments.

APPI-CovR



Bluetooth



GSM
Compatible



APPI-Smart
Compatible



Walkie-Talkie
Compatible



Lone worker
protection



Water & dust
Resistant



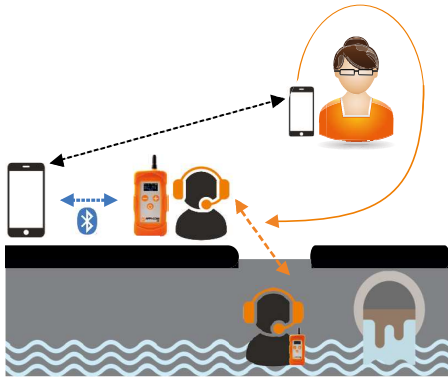
PTT/
Duplex

APPI-CovR is a communicating noise-canceling headset embedding the «APPI» radio technology and its Full-Duplex conference mode. This headset is equipped with an noise cancelling microphone and offers a hearing protection for noisy environments.



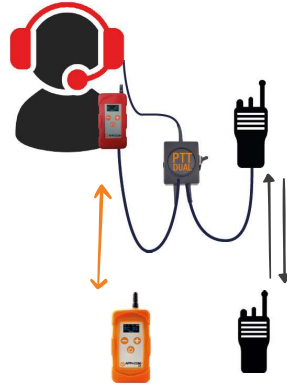
BLUETOOTH

Create a gateway to the GSM network with your smartphone to integrate a remote team member.



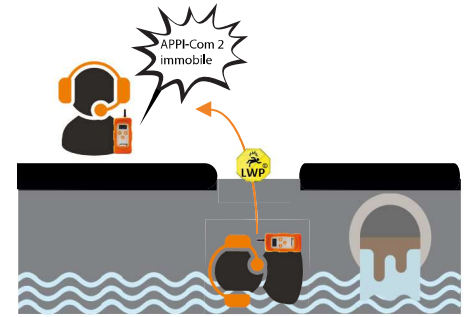
PTT-DUAL

Create a gateway to any Walkie-Talkie network. Communicate on two networks simultaneously.



MAN DOWN ALERT

APPI radios are equipped with safety systems; Immobility vocal alert (LWP) or signal loss (Safeline).



APPI-Smart C : control your APPI-Com / CovR from your smartphone.

APPI-Smart S : APPI-Smart C + automatic transfer of LWP alerts and manual call to a pre-registered number from any APPI-Com / Covr in the group.



OUR SELECTION OF HEADSETS AND ACCESSORIES



**BONE CONDUCTION
INTRA-EAR**



**INDUSTRIAL NOISE
CANCELLING HEADSET**



**BONE CONDUCTION
BLUETOOTH HEADSET**



**WIRED EXTENSION
AND RELAY**



SPECIFICATIONS

RADIO APPI-Com LR

Range >2.3mi (4km)

Free bands: 863-870MHz CE / 902-928MHz FHSS

Frequency hopping (scrambled) mode

Up to 50 channels (depends on Country)

Number of users per group : Unlimited

Emission power: less than 500mW

Certifications: CE / FCC / IC / ATEX

SyncAll: no fixed nor mobile base

FEATURES

DSP Based Noise canceler

Pager & Man Down vocal alert

Bluetooth connection to Headsets / Phone / PMR ...

POWER AND BATTERY

Talk time: Up to 9h

Listen time: Up to 10h

Charging on any USB plug

External battery extension

GENERAL CHARACTERISTICS

Size: 3.6x1.9x0.6 in / 91x48x15 mm

Weight: 3 Oz / 80 g

Shockproof : IK8

Watertight : IP67

APPI & APPI-Com
are Registered trademarks

APPI-Technology Inc.
+1 865-722-5729

APPI-Technology SAS - FRANCE
+33 9 83 98 68 73

info@appi-technology.com